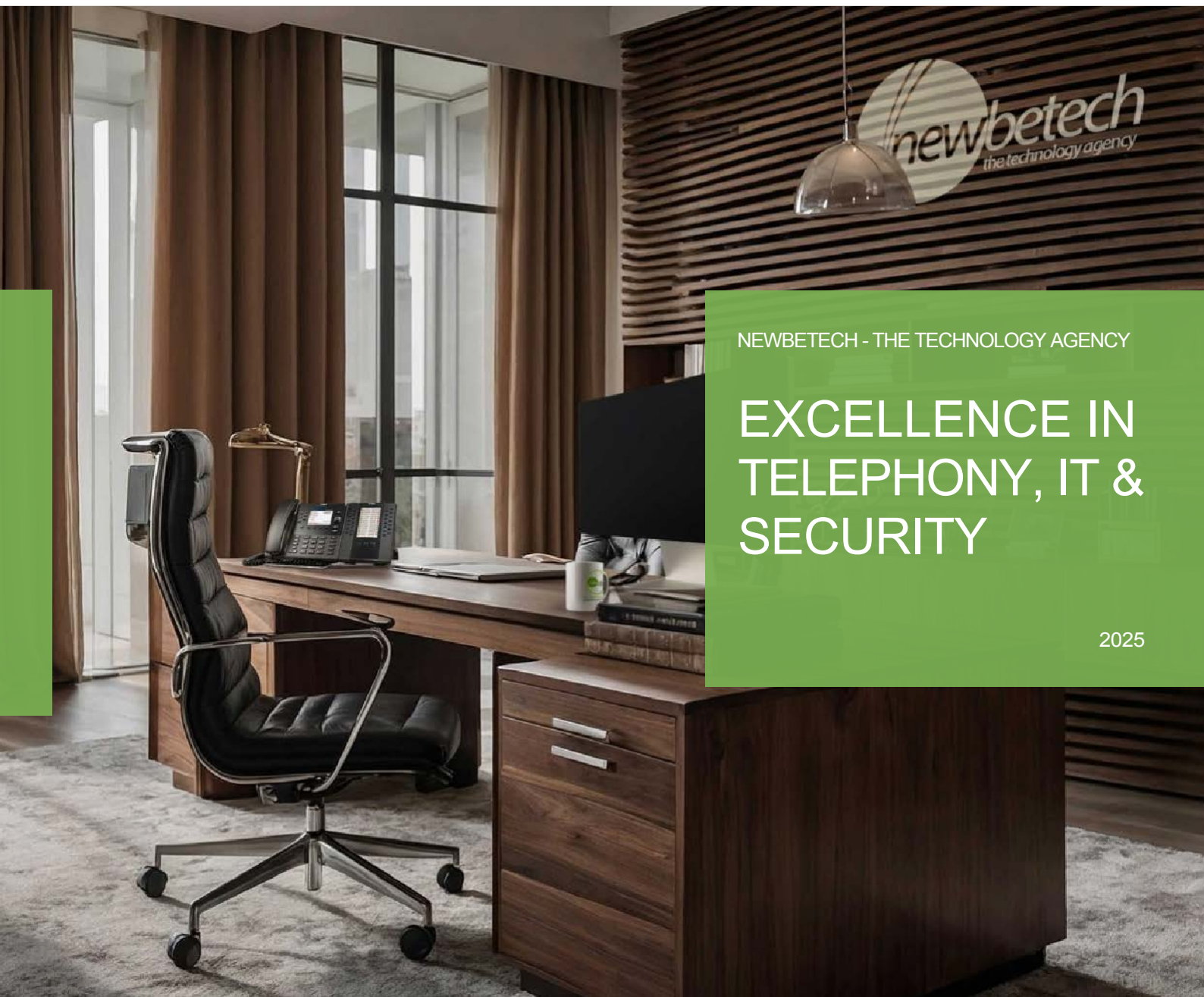


NEWBETECH.COM




NEWBETECH - THE TECHNOLOGY AGENCY

# EXCELLENCE IN TELEPHONY, IT & SECURITY

2025





The new standard for excellent services in IT, communications and security.

## WHY US?

The newbetechn corporate group is your professional service partner for IT, communication and security solutions. With many years of experience and in-depth expertise, we offer tailor-made solutions that are perfectly tailored to the needs of small and medium-sized companies.

Whether you are located in North Rhine-Westphalia or anywhere else in Germany or even Europe, our flexible and efficient service structure enables us to support you throughout the country. We specialise in providing you with comprehensive service that is available anywhere and at any time, rather than just selective support. Trust newbetechn for reliable, innovative and future-proof IT and communication solutions.





## THE DIFFERENCE

Service is the foundation on which we have built our entire organisation. Our commitment to first-class customer service shapes every aspect of our work and determines our actions. That is why we work according to the motto: excellent customer service should come into play long before problems or questions arise.

Our philosophy is based on the belief that preventive measures and early support are crucial to ensuring smooth processes and nipping potential challenges in the bud. By designing our customer service in this way, we can often avoid problems before they even arise. This not only saves time and resources, but also strengthens the trust and partnership between us and our customers.

---

Your unique partner for tailor-made solutions and first-class service.



Maximum security and maximum  
efficiency for your business.

## SAFETY AND EFFICIENCY

The combination of the services offered by newbetech sicherheitssysteme GmbH and newbetech solutions GmbH opens up a wide range of possibilities for our customers, who can access a comprehensive portfolio of solutions from a single source. This synergy enables us to offer a comprehensive service covering all aspects of modern IT, communication and security solutions.

Our portfolio ranges from highly developed telecommunications systems and alarm and light call systems to innovative fire alarm systems. Thanks to the close cooperation between the two companies, we can offer tailor-made, integrated solutions that are specifically tailored to the needs of our customers.

Our comprehensive range of services and products offers significant added value, particularly in areas where the care, promotion and maintenance of human health are paramount.





## OPTIMAL INTEGRATION

The integration of different systems not only simplifies operation, but also increases reliability and responsiveness. Our goal is to provide our customers with a central point of contact who can meet all their requirements competently and efficiently. This saves time, reduces complexity and increases operational reliability.

With the combined expertise of newbetech sicherheitssysteme GmbH and newbetech solutions GmbH, we are setting new standards in the industry and offering our customers solutions that go far beyond the standard range. Trust in our many years of experience and our commitment to providing you with the best possible service and the most innovative solutions.

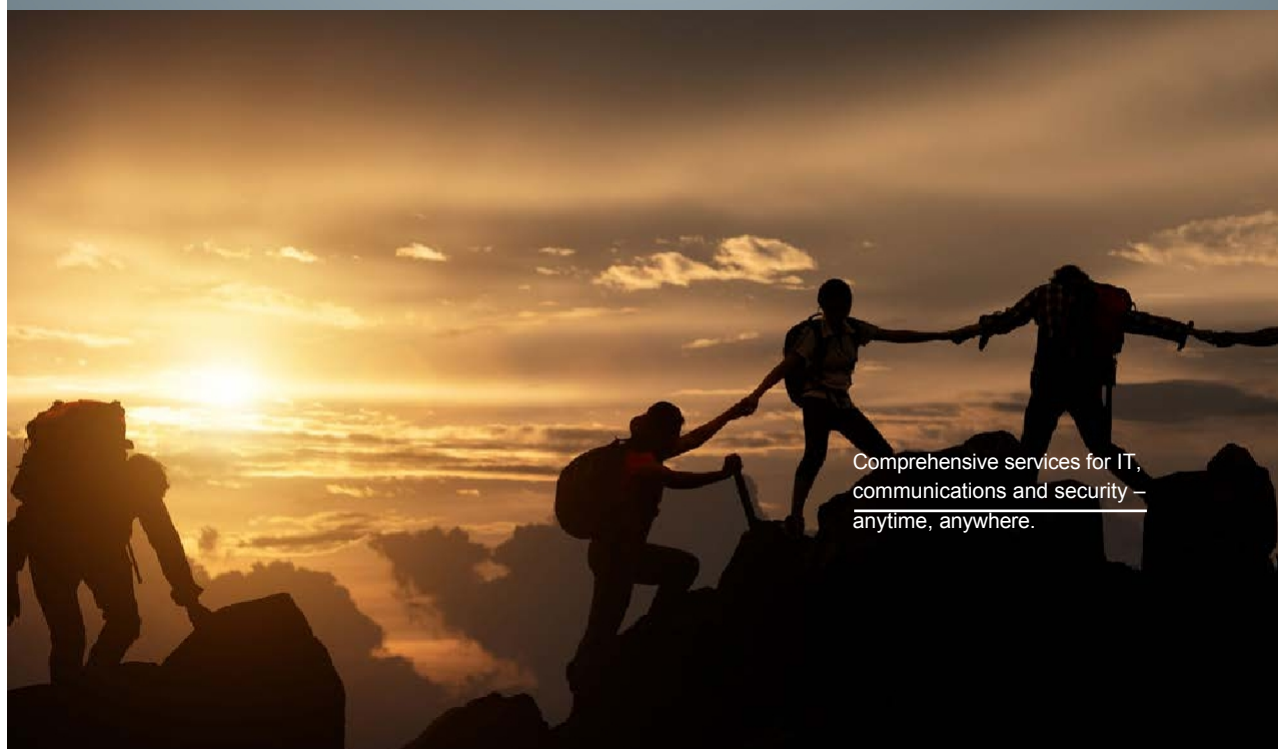
---

Optimal integration for  
efficient processes and  
maximum  
reliability.

## OUR SERVICES


As a specialist in modern ITC systems, fire alarm systems and call systems, we offer comprehensive advice and first-class services. We take the time to understand your individual requirements and challenges. Together with you, we develop modern and professional solutions that are specifically tailored to your needs and circumstances.

Our tailor-made solutions help simplify and streamline business processes. By integrating advanced technology and innovative approaches, we ensure that your communications and security infrastructure is robust, reliable and future-proof.



Comprehensive services for IT,  
communications and security –  
anytime, anywhere.





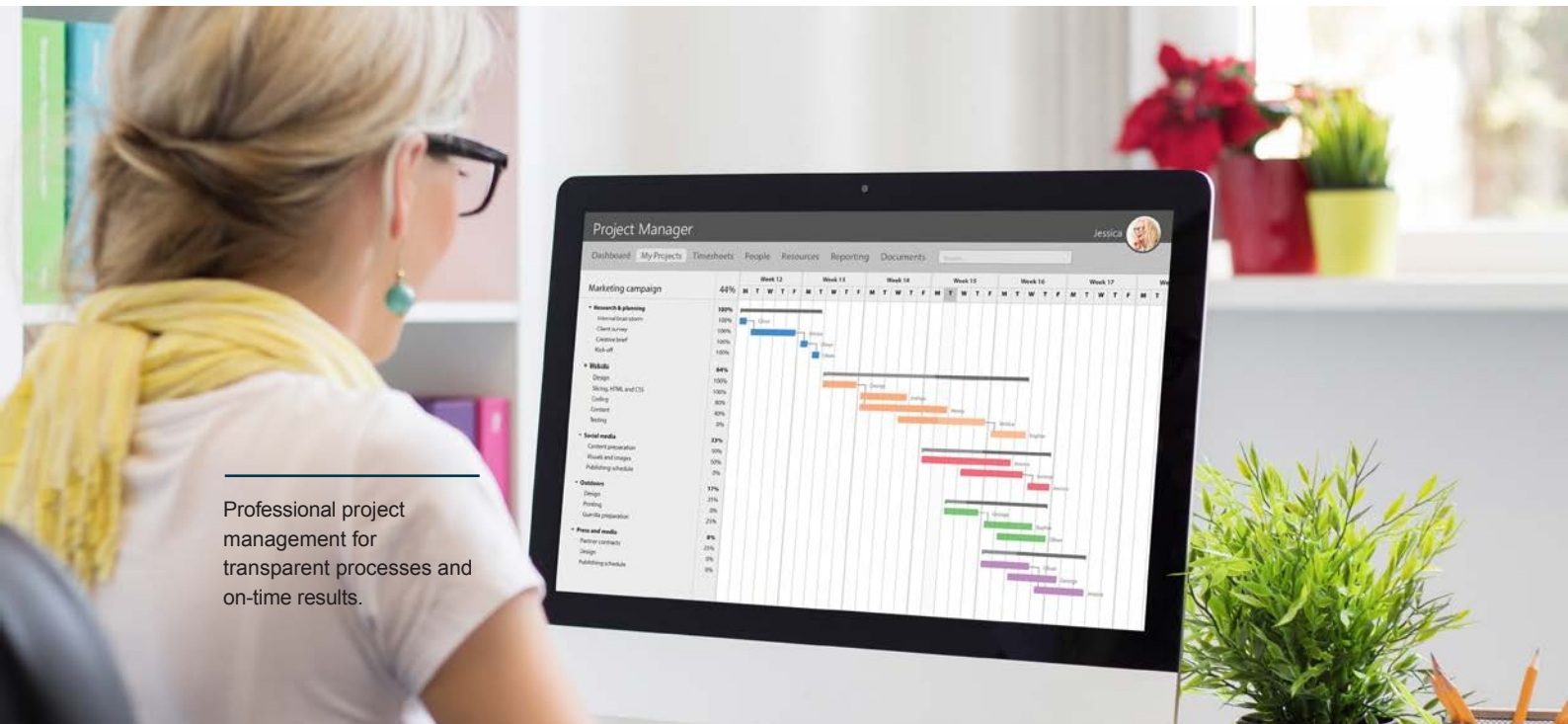
Precise planning and  
comprehensive consulting for  
tailor-made solutions.

## PLANNING AND CONSULTING

Our consulting services cover all relevant systems and technologies, enabling you to make an informed decision. We help you select the best solutions to optimise your business processes and increase your security standards. You can rely on us not only for planning and design, but also for the implementation and maintenance of your systems.

With newbetech, you have a partner who stands out for their expertise, experience and commitment and who is always working to perfect your communication and security infrastructure.





Professional project management for transparent processes and on-time results.

## PROJECT MANAGEMENT

We make it our job to manage the entire project at your premises and in collaboration with you, ensuring that every step is transparent and traceable. From initial planning to final implementation, we are at your side as a reliable partner. We keep you regularly updated on the progress of the project and ensure that you are always informed of the current status.

Adherence to previously agreed deadlines and accurate cost planning are a matter of course for us. We attach great importance to completing our projects on time and within the agreed budget. To this end, we rely on precise planning, continuous monitoring and proactive communication. Should unexpected challenges arise, we will inform you immediately and work with you to find suitable solutions.

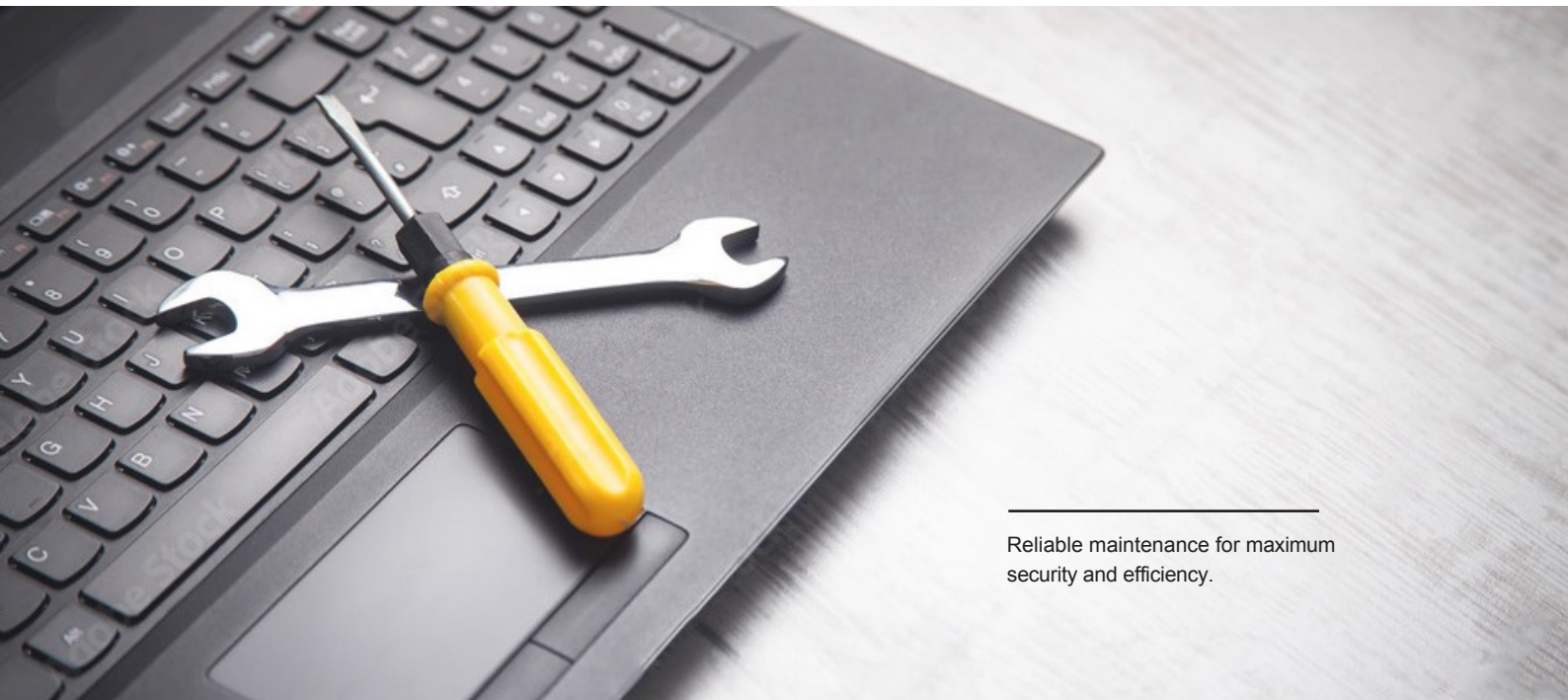
# IMPLEMENTATION

The next step towards your company's success: implementing the new system, enhancements or other important applications. Our experienced specialists work closely with your team to ensure that integration runs smoothly and efficiently. During the implementation phase, we monitor every step closely and ensure that all technical requirements are met.

In addition, we offer comprehensive training and support to familiarise your team with the new systems and ensure a smooth transition. If you have any questions or problems during or after implementation, our expert support team is here to help.



On time implementation for  
seamless integration and  
optimal success.



---

Reliable maintenance for maximum security and efficiency.

## MAINTENANCE

After the successful completion of the project and handover of the system, we won't leave you on your own. We take care of regular checks and maintenance of your technology to ensure that it works optimally and reliably at all times. Our experts carry out preventive maintenance measures, identify and rectify potential problems at an early stage, thus ensuring the long-term stability and security of your systems.

Our service is available nationwide, around the clock. No matter where your company is located or when you need support, we are always there for you. Our 24/7 support ensures that you can always rely on our expertise and assistance, whether for routine checks, urgent repairs or technical support.





## OUR PORTFOLIO

The newbetech group's product portfolio includes software and hardware components from renowned manufacturers of modern telecommunications, security technology and network technology. Here is just a selection of the manufacturers for the respective solution areas:

### TELECOMMUNICATIONS & UCC

- Mitel
- ecotel communication AG
- ascom
- Audiocodes
- F24
- Microsoft Teams Phone Integration

### FIRE ALARM TECHNOLOGY & CALL SYSTEMS

- Cereda Systems
- Hospicall
- Tetronik
- Detectomat
- Esser by Honeywell

### IT & NETWORK

- Ubiquity UniFi
- LANCOM
- SuitePad in-room tablet
- Smart Care by DiscVision

---

Your comprehensive portfolio  
for IT, communication and  
security solutions.

## OUR SERVICE PORTFOLIO

Our services are focused on your needs and requirements. It is our goal to always meet your individual wishes and technical demands and to satisfy you with professionalism and a cooperative approach.

- Fast integration into your IT infrastructure
- Our own trained and certified specialists
- Round-the-clock availability
- Nationwide availability
- Use of state-of-the-art technologies
- ITC and security systems from a single source
- Partnership-based approach, commitment and customer focus

---

Comprehensive support with  
newbetechn: your solution for IT,  
communication and security.



Your partner for tailor-made solutions, maximum reliability and 24/7 support.



## OUR ADVANTAGES

Our comprehensive service structure enables us to offer companies nationwide a reliable service that is available at all times. With our combined expertise in modern ITC systems, fire alarm systems and patient call technology, we create integrated solutions that optimise your operational processes, increase security and boost efficiency.

We accompany you through all project phases – from detailed planning and consulting to successful implementation and beyond. Even after the system handover, we are at your side with regular reviews and 24/7 support. Our punctual and cost-efficient way of working ensures that your projects are completed on time and within budget.







NEWBETECH.COM

## NEWBETECH - THE TECHNOLOGY AGENCY

An der Gumpesbrücke 15  
41564 Kaarst  
Germany

Phone +49 2131 66511  
Fax +49 2131 66511-111

Email [willkommen@newbetechnology.com](mailto:willkommen@newbetechnology.com)



© Copyright 2025 newbetechnology - the technology agency.  
All rights reserved. The newbetechnology logo is a trademark of newbetechnology - the technology agency. Any mention of third-party trademarks is for reference purposes only, and newbetechnology makes no representation or warranty regarding the ownership of these trademarks.